

## NETSUITE SMBXML INTEGRATION

### The Approach

Explore Consulting is a Solution Provider who understands the dynamic and complex integration needs that businesses face to stay competitive. Therefore, we have developed a NetSuite integration architecture that is flexible and cost-effective. Explore's automated integration solution utilizes NetSuite's smbXML and System-to-System products. smbXML is NetSuite's definition of how a valid XML-based file should be structured to query or upload data with NetSuite. System-to-System (s2s) establishes a secure, 128 bit encrypted network connection between your server and NetSuite's server. Therefore, s2s allows our XML-generating software to exchange NetSuite data without user interaction.

### Software Solution Facts

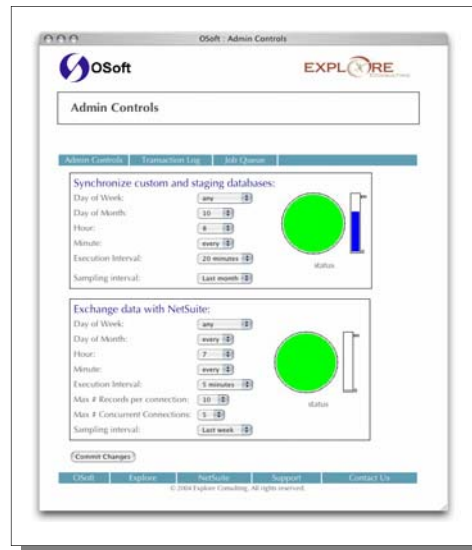
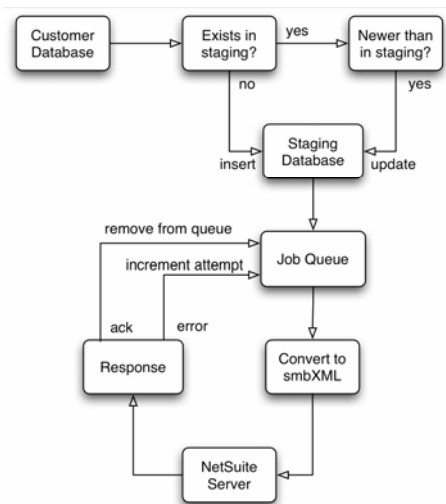
- **Real-time Dashboard** - Key performance indicators and graphs depict the current status of all data synchronizing jobs.
- **Low Maintenance** - Object oriented architecture and meta-data driven to minimize ongoing maintenance.
- **Open Architecture** - Two technology platforms to choose from: Open Source (php, mysql, apache linux/bsd) or Microsoft .Net (asp .net, sql, iis, windows).
- **Quick Implementation** - Get up and running quickly because we have developed a drop-in solution that can be easily customized. You can host or we can provide it for you.
- **Save on Costs** - Avoid the risk and cost of developing your integration infrastructure from scratch.

## AUTOMATED SYSTEM-TO-SYSTEM DATA EXCHANGE

This system automates the real-time or batch synchronizing of NetSuite data with third-party packages and custom applications by developing a software package. The technology is bi-directional, it supports query, add and update of the following data elements:

- Vendor
- Customer
- Partner
- Contact
- Store Category
- Inventory/Non-inventory Item
- Discount Item
- Sales Order
- Cash Sale
- Invoice
- Custom Records/Custom Fields

For example, here is our process flow for uploading a custom e-commerce site's orders into NetSuite:



The Job Management Console provides an intuitive interface to administer the operations.

The Job Management Console controls all aspects of exchanging data between NetSuite and external applications. All the jobs are parameterized and configurable via web forms to manage day-to-day functions:

- Current Job Queue
- Max records per connection
- Max concurrent connections
- Job and record level logging
- Quick search and view transaction logs
- Automated email messaging system