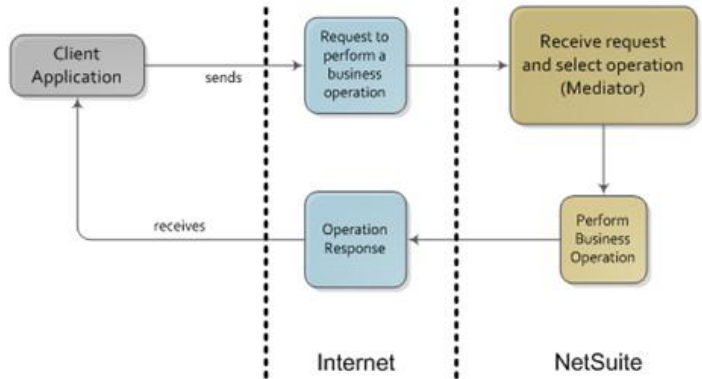




CloudConnect™ Mediator for NetSuite – Real-time Integration Simplified

The CloudConnect Mediator is an easy to use integration framework built using NetSuite's Suitelet technology that simplifies your integration development and saves you time and money.

Many organizations running their businesses on the NetSuite platform need to build real-time integrations to systems outside of NetSuite, but don't want a middleware platform and also don't want to invest in a heavy learning curve. The CloudConnect Mediator provides a lightweight solution for ease of use and scalability that removes the complexities and provides performance and scalability.



Benefits

- Ease of Use - commands built on the Mediator can be tailored to the client's applications exact needs.
- Faster performance than web services.
- Scalable in a multiple user environment.
- Increased throughput of data.
- Error handling and logging.
- Email notification of failures.
- Easily implemented security.
- Supports HTTP and HTTPS environments.
- Deployed completely within NetSuite, no external hosting or software to maintain.
- Command pattern allows scripts to be built from loosely coupled sub-commands.

How it Works

The CloudConnect Mediator is a bundled solution that provides a service layer built upon Suitelet technology in NetSuite. The Mediator acts as an intermediary between multiple client applications for inbound communication to NetSuite via custom APIs using JSON text strings over HTTPS.



The Mediator provides a pattern to develop and store custom SuiteScript commands to be executed within NetSuite based on requests while logging the

response and encapsulating NetSuite-specific business logic within NetSuite.

Explore Consulting will assist in mapping out the integration points and develop a list of commands needed for your integration. The Mediator is then deployed to your NetSuite account via the SuiteBundler and available for use by external apps.

We abstract the NetSuite processes, data structures and complexities to simplify the knowledge required to develop integrations to NetSuite.