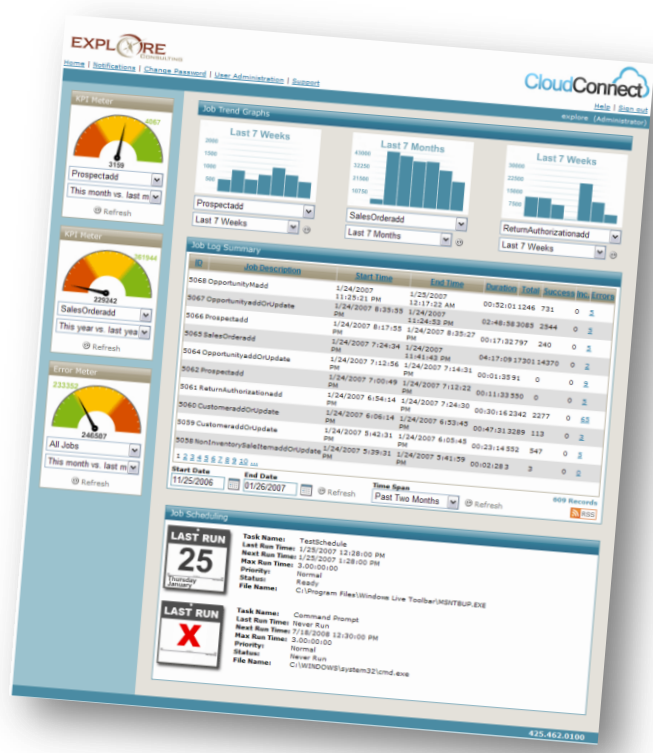




CloudConnect™ Integration for NetSuite

Explore's CloudConnect™ platform integrates data from virtually any business system, in any format, in a bi-directional manner with NetSuite. The goal of CloudConnect™ is to provide the framework necessary to build robust, data-centric integration applications while providing the flexibility to accommodate any business logic or external systems connectivity needed. Key features of this highly managed, SaaS-based solution include:

- Rapid Deployment
- Industry-Leading Service and Support
- Low Ongoing Costs
- Real-time Dashboard with Scheduler and Notifications
- Secure Login & User Administration
- Open Architecture for Unlimited Extensibility
- Hosted in Industry-Leading Data Center with 99.9% Network Uptime Guarantee
- Guaranteed Delivery of Transactions
- Configurable KPIs, Gauges and Trend Graphs
- Optimized for High-Throughput Systems



CloudConnect™ Product Options

- **CloudConnect™ Enterprise** – Our White Glove solution for larger & more complex integration needs. Includes solution design & implementation, platform licensing, hosting, ongoing monitoring and support, and the CloudConnect Dashboard.
- **CloudConnect™ Lite** – The best approach for smaller integration jobs. Utilizing the same base product and hosting as CloudConnect Enterprise but ideal for clients that don't require the management features and reporting the Dashboard provides.
- **CloudConnect™ Mediator** – This easy to use framework for NetSuite integration provides a lightweight, scalable, and fast-performing service layer built upon Suitelet technology in NetSuite that does not require hosting – lives 100% within NetSuite. The Mediator is an ideal customizable solution for real-time integration or organizations with internal development teams who want to avoid the learning curve, but manage more of the integration on their own.
- **CloudConnect™ ODBC Sync** - Keep the safety and security of your production data in the cloud and easily re-create local copies of your data in a SQL Server database for integration, reporting and analysis. Your database can reside on your own server or be hosted on Explore Consulting's CloudConnect™ Platform. Once in a local database, you can connect it to any reporting or analysis tools you're accustomed to using.

Common Systems

- All major ERP/CRM systems
- All major databases
- XML and Web Services
- Flat-files using FTP, HTTP or email
- All major cloud applications
- Middleware and all major EAI platforms

Popular Integrations

- | | | | |
|---------------------|----------------------|-------------------------------|--------------------|
| ▪ Customer/Contacts | ▪ Cash Sale/Invoices | ▪ NetSuite | ▪ Oracle eBusiness |
| ▪ Sales Orders | ▪ Bills | ▪ Salesforce.com | ▪ SAP |
| ▪ Opportunities | ▪ Purchase Orders | ▪ CNET Channelonline | ▪ AWS |
| ▪ Vendors | ▪ Store Categories | ▪ Ultimate Software | ▪ Amazon |
| ▪ Partners | ▪ Custom Web Stores | ▪ Third Party Logistics (3PL) | ▪ SeeWhy |

Customer Testimonials

GHA Technologies

NetSuite to CNET ChannelOnline

"NetSuite has worked perfectly for our organization since Explore Consulting integrated it last year. We consider the frontend with CNET, the middle with Explore and the back office with NetSuite to be state-of-the-art, strategic, and very green (paperless) from start to finish. By start to finish I mean from the client requesting a quote, to paying for their transaction and all points in between are done 100% paperless with a high level of security. The Explore subject matter expertise with NetSuite is unmatched and their entire Professional Services team have always acted with a sense of urgency and been committed when service and delivery count."

- George Hertzberg, President

Inflection HR

NetSuite to UltiPro Server

"The main requirement for any accounting system selected by our company was that it had to be flexible enough to allow for integration from other billing systems currently being utilized. With NetSuite and Explore Consulting we found a winning combination. NetSuite provided the system that allowed us near unlimited scalability; and Explore provided the rich technical expertise needed to create bridges that allowed our systems to communicate. The automated integration process created by Explore has allowed our staff the much needed additional time to focus on other aspects of their daily requirements, including the development of further automation projects."

- Sevrin Gardner, President

InformationWeek



"Even as SaaS has proved it can handle critical roles at large companies, integration remains far from a drag-and-drop job."