



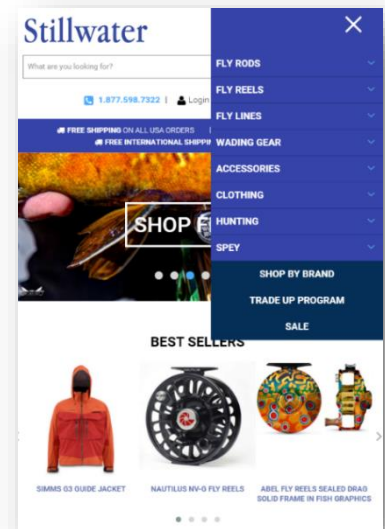
Explore Consulting SuiteCommerce FastTrack Navigation Module

Managing your NetSuite SuiteCommerce Advanced website is both necessary and beneficial for your business, but it can require a significant amount of work from your development team to implement updates as needed.

Explore Consulting provides tools to make SuiteCommerce Advanced site management easier. One of those tools is our SuiteCommerce FastTrack Navigation Module. This module simplifies the process of adding navigation hierarchies to header and footer links within SuiteCommerce Advanced websites by allowing anyone with an approved role to make navigation updates.

Your development team shouldn't be bogged down with website management tasks.

Leverage the power of the Explore Consulting SuiteCommerce FastTrack Navigation Module to marry power with simplicity and enable non-technical decision makers to implement impactful changes.



Key Benefits

Ideal for non-technical resources. Whether you are in the marketing department or part of the development team, our FastTrack Navigation Module makes updating and managing your navigation menu simple.

Easy permissions management. There are many people who contribute to your website on a daily basis. The FastTrack Navigation Module allows you to easily manage which roles have permissions to edit your navigation menu structure.

Timely site maintenance. Our FastTrack Navigation Module allows anyone with an approved role to implement navigation menu changes in real-time and without breaking the site. Don't rely on a development resource to make needed updates; empower your team to make them as needed.

Simple structure in NetSuite. The FastTrack Navigation Module features a clean, streamlined backend in NetSuite that makes managing your navigation hierarchy simple.

Module Features

- Simple editing of display text, URL creation and link location
- Optional parent navigation record allowing for drop-down menus
- Multiple user access
- Ability to edit navigation in both main menu and footer links
- Customization of URL types in navigation menu
- Ability to link to external locations from navigation menu

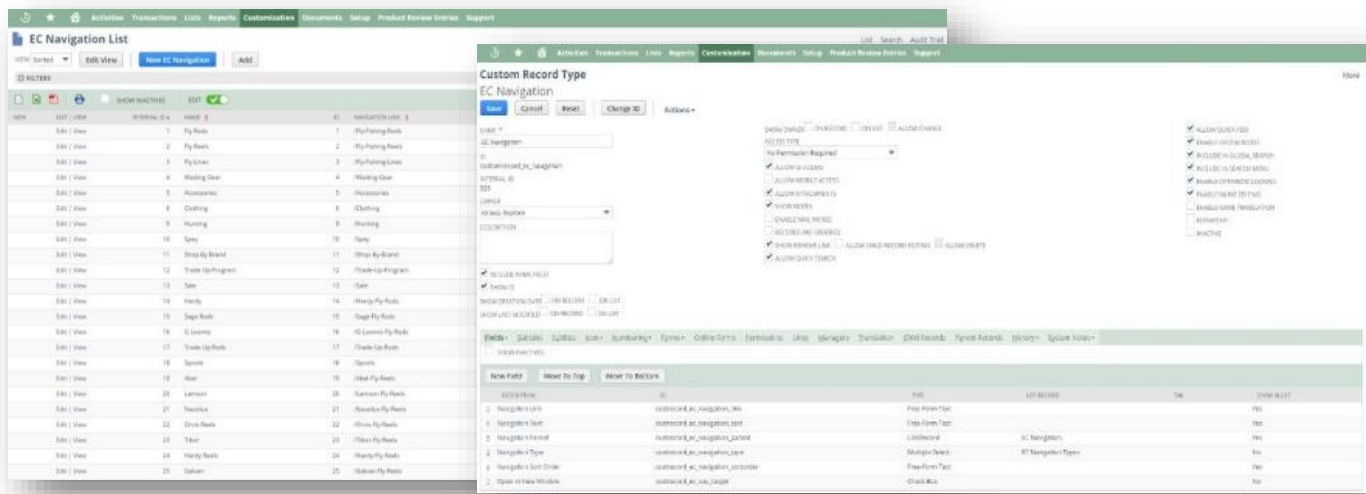
What Is SuiteCommerce FastTrack?

As a Certified SuiteCommerce Digital Agency Partner with more than 13 years of NetSuite Ecommerce experience, Explore Consulting understands how to successfully leverage the SuiteCommerce platform to take your online business to the next level!

Our SuiteCommerce FastTrack is a collection of pre-built modules that provide a jumpstart approach to building SuiteCommerce webstores, including several pre-built bundles developed to get your site launched quickly.

The solution, **available at no cost to our NetSuite services customers**, leverages newly released SuiteCommerce Advanced features and accommodates commonly needed functionality from enhanced navigation to category management.

Featuring responsive and mobile capabilities, it's the **optimal entry point for a quick, stream-lined SuiteCommerce website launch**.



About Explore Consulting

Based in Bellevue, Washington, Explore Consulting was founded in 2001 and is a professional services company dedicated to providing innovative and cost-effective solutions for their customers' database and IT systems' needs.

Having specialized in SaaS solutions for more than 14 years, Explore Consulting is the largest and most

experienced NetSuite reseller and solution provider in the Northwestern United States.

Explore Consulting is well-known as a leader in NetSuite implementation, customization, integration and Ecommerce, and has also been a 10-time NetSuite Star Performer, won 24 NetSuite awards and was named as 2014 NetSuite Partner of the Year, Americas.

For more information, visit www.exploreconsulting.com.

